



The Mount Beauty Progressing Place project works are about to commence in the Town Centre.

The proposed timing of the kerb, landscape and asphaltting works are indicated on this plan.

The attached plans illustrate the planned changes to kerbs and parking layouts.

Further information can be found on the Alpine Shire Council website under the 'Major Projects' tab.

If you have any questions about the works or the planned changes, please contact Francine Stacey on 5755 0567 or via email francines@alpineshire.vic.gov.au.

MOUNT BEAUTY PROGRESSING PLACE PROJECT PROPOSED TOWN CENTRE WORKS TIMING

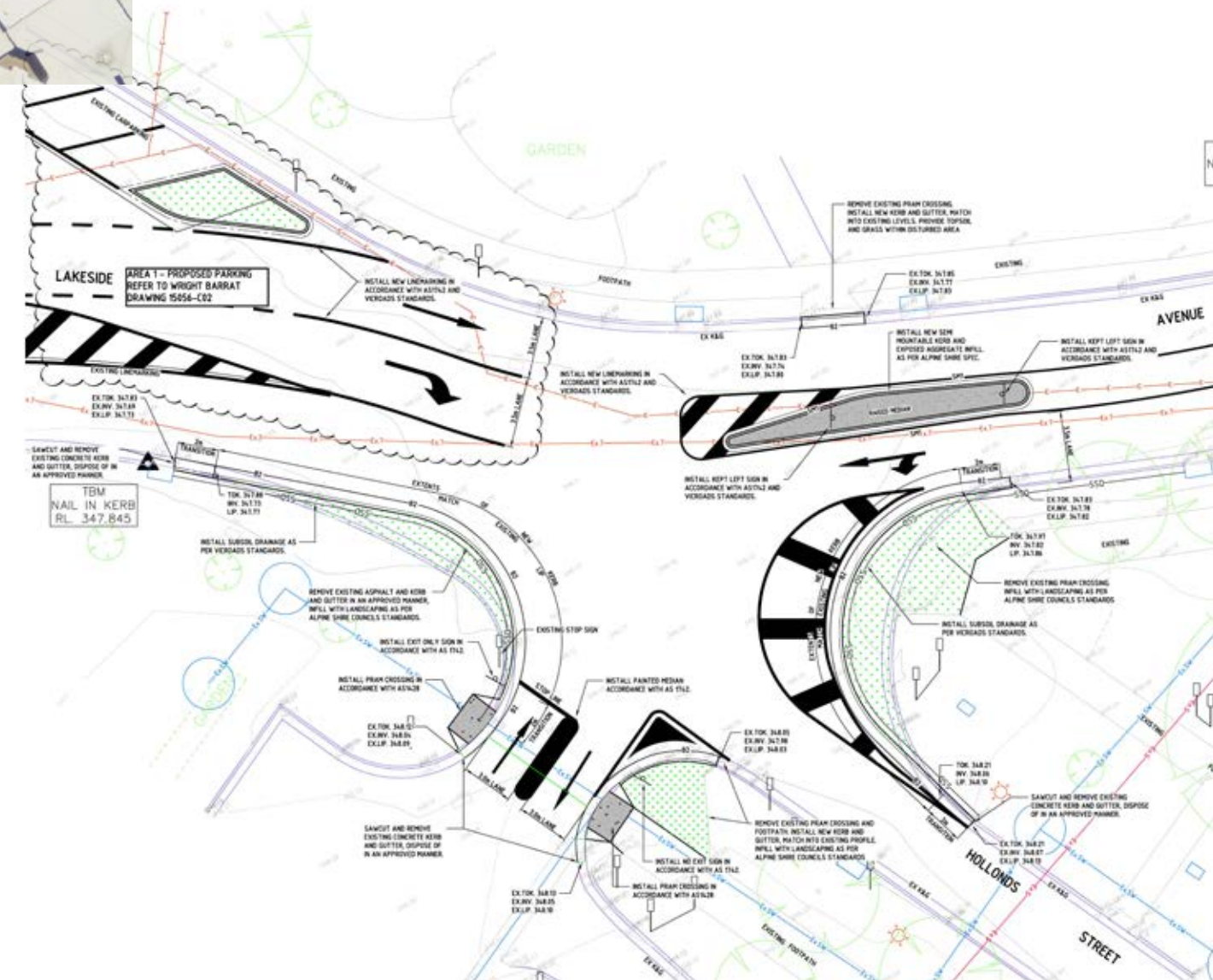
20 November 2015



Kerb works include:
 - indented parallel parking in Park Street; and
 - 2 additional angle parks in Hollonds Street.

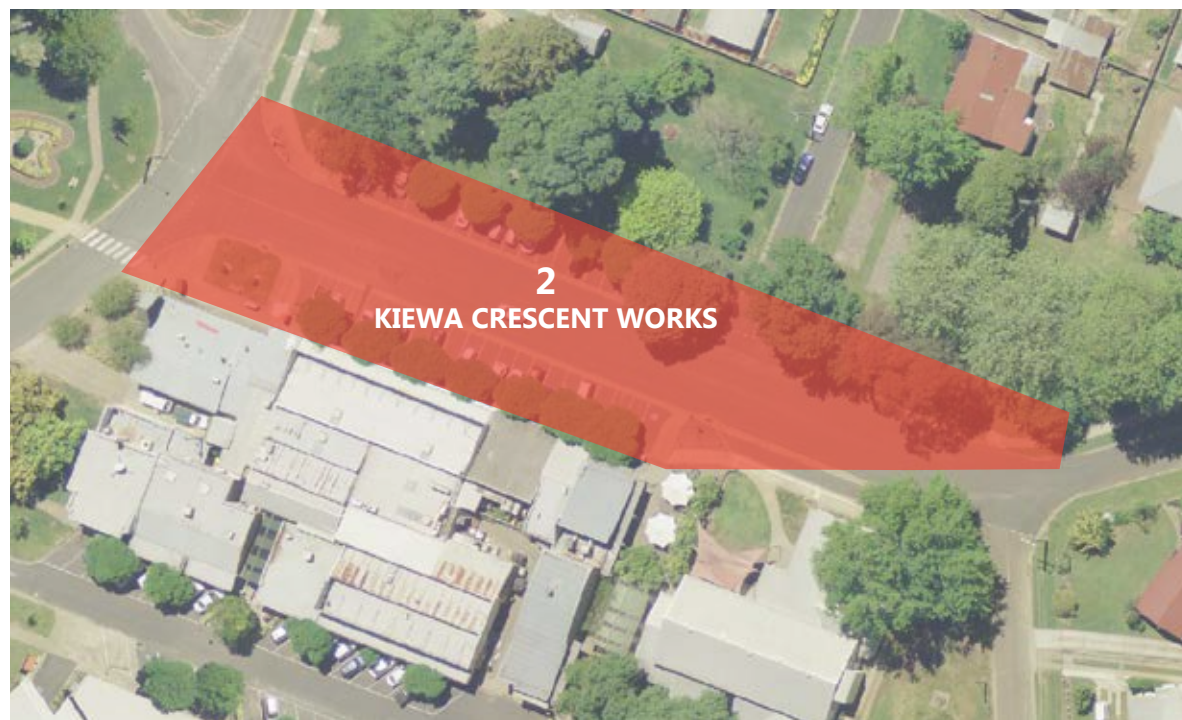


Kerb works include:
 - modifications to the Hollonds Street and Lakeside Avenue intersection; and
 - pram crossings to access Memorial Park.



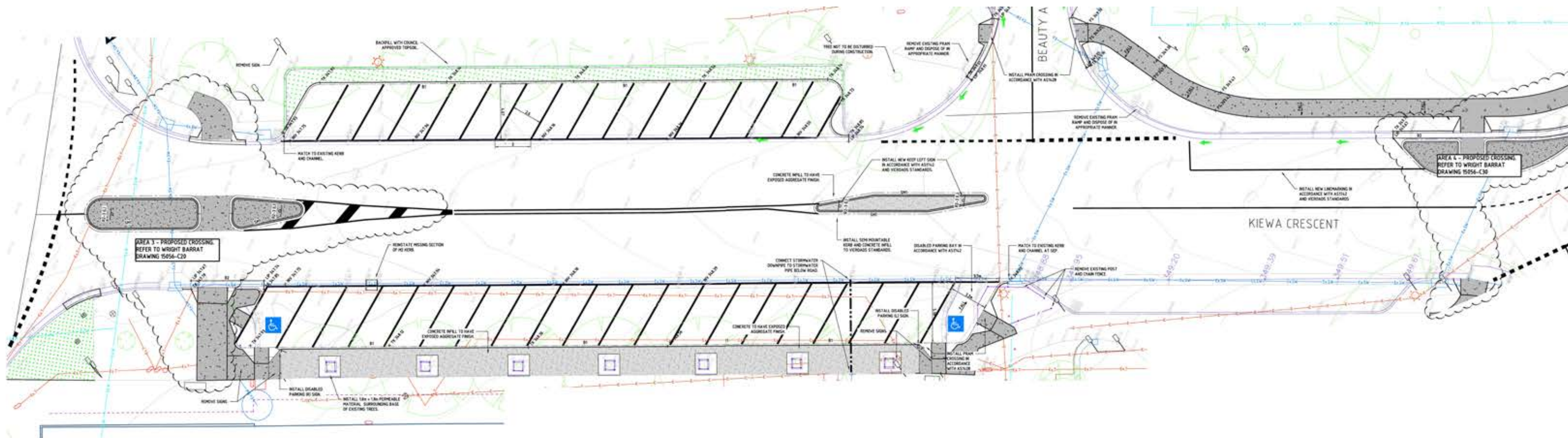
MOUNT BEAUTY PROGRESSING PLACE PROJECT PROPOSED TOWN CENTRE KERB WORKS

20 November 2015



Kerb works include:

- changing right angle parking to angle parking;
- pedestrian refuge at western end of Kiewa Crescent; and
- extension of footpath from Park Street to Beauty Avenue.



MOUNT BEAUTY PROGRESSING PLACE PROJECT **PROPOSED TOWN CENTRE KERB WORKS**

20 November 2015